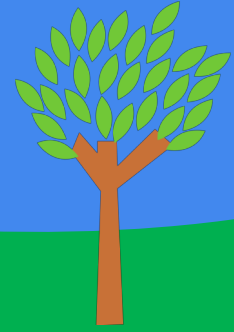


San Joaquin Children's Alliance



FACTS ABOUT SAN JOAQUIN COUNTY KIDS

Child Population by Race And Ethnicity

51 % Latino
23% Caucasian
13% Asian
7% African American
5% Other

Children are a high proportion of San Joaquin County's population.

- 28% of the county population is children, compared to 23.6% statewide.
- 45% of households have children.
- The number of households with children is expected to grow 38% from 2010 - 2050.

Over the past 5 years, the San Joaquin County community has worked hard to improve its care of children. San Joaquin County has been held up as a model for collaborative work on children's issues by one of the nation's largest foundations serving children, The Packard Foundation. There is significant evidence of progress:

Children of all ethnic groups are doing better in school

- The high school graduation rate has increased from 71% to 80%.
- The test scores of high school students have improved significantly.

Children have better healthcare

- 95% of children have health insurance. The number of uninsured children has been cut by 230%.

Fewer children are getting into trouble.

- Teen births have declined dramatically by 36%.
- Juvenile felony arrests have declined by 44% from 1413-797 arrests.

Growing a better future for all our kids

San Joaquin Children's Alliance

Yet our families are struggling...

to provide their children with the opportunities to succeed. Too many of our families are unable to make ends meet and put food on the table.

Economic Stability	
Poverty	25% of our children live in poverty as defined by the federal government - an income of less than \$24,250 for a family of 4. 18% of children live in areas of concentrated poverty, where it is even more difficult to break out of the cycle of poverty.
Self - Sufficiency	Only 45% of our families are economically "self-sufficient" according to standards cited by one of the state's leading foundations, the Packard Foundation. Self-sufficiency for a family of 4 in San Joaquin County is considered \$51,000 (The money required to meet basic daily needs.)
Access to affordable preschool/ childcare	The cost of childcare for preschoolers is about \$7000 a year. 89% of subsidized preschool programs have a waiting list. Without childcare, families are unable to work.
Free / Reduced Lunch	Two - thirds of our children are eligible for free and reduced lunch.
Food Insecurity	28% of our children live in homes that are considered "food insecure."

Pressures on families result in ...

Serious social, health and safety problems, which plague our community and block opportunity for our children and youth.

Community Impact	
Homelessness	Homeless children enrolled in public schools have increased by 19%. There are now 3350 homeless children in the public schools - enough to fill 130 classrooms.
Increased Vulnerability	Children in foster care has increased by 27% with 1567 children currently effected.
Youth at Risk	San Joaquin County has the highest youth homicide rate in the state.
Increased Vulnerability	Only 34% of third graders read at grade level, compared to 46% statewide. San Joaquin County ranks 50th out of 58 counties on this statistic.
Not Ready for School	San Joaquin County ranks 49th out of 58 counties in California for having preschool children in licensed programs. Access to quality preschool is considered a major factor in determining success in school.

**We know what needs to be done.
We need the resources to do it.**