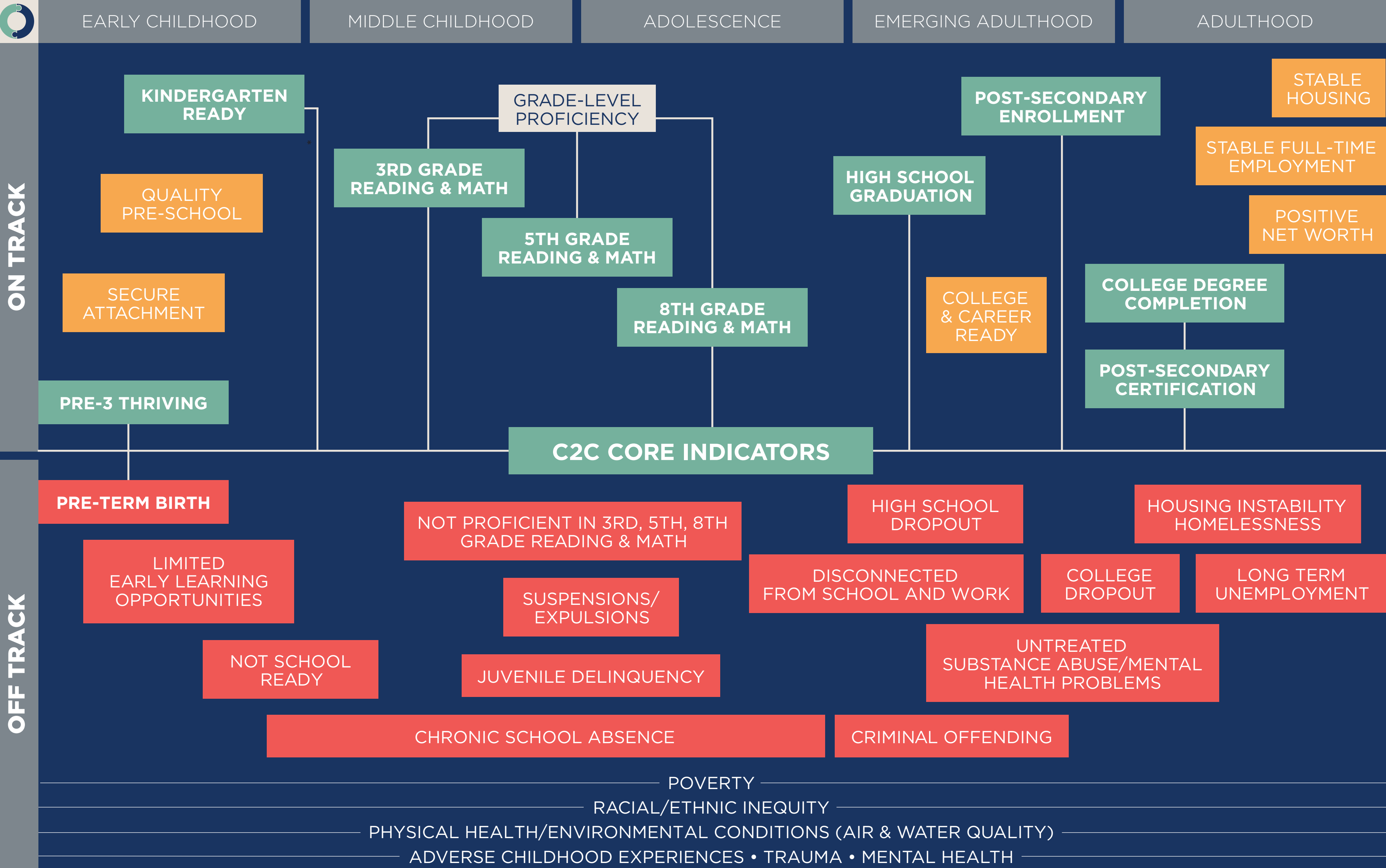


FRESNO COUNTY COMMUNITY AGENDA





FRESNO COUNTY OVERVIEW

POPULATION TOTAL
984,541

POPULATION LIVING IN POVERTY
255,981
26%

TOTAL NUMBER OF CHILDREN
280,951

CHILDREN LIVING IN POVERTY*
106,761
38%

MEDIAN AGE
32.3
59% of the population is under age 35

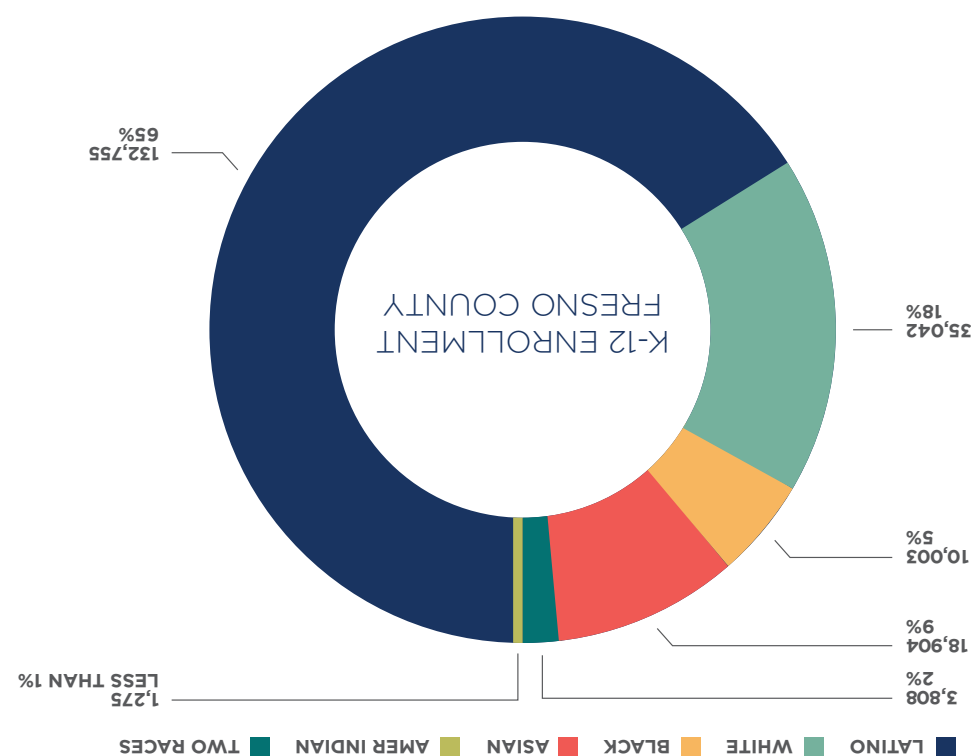
MEDIAN HOUSEHOLD INCOME
\$45,963

Estimated percentage of children ages 0-17 in living situations with incomes below the federal poverty threshold; the federal poverty threshold was \$24,600 for a family of two adults and two children in 2018.

NUMBER OF
SCHOOL DISTRICTS
32

20 OF 32
DISTRICTS HAVE
84%
OR MORE STUDENTS
RECEIVING FREE OR
REDUCED LUNCH

13 OF 32
DISTRICTS HAVE
40%
OR MORE ENGLISH
LANGUAGE
LEARNERS

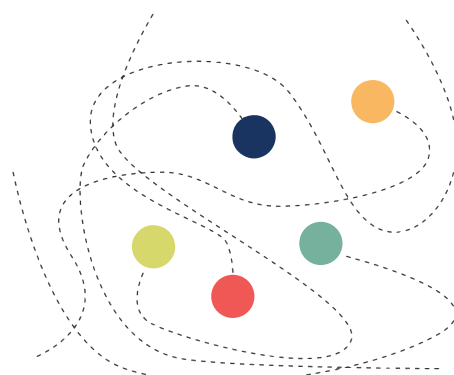


FRESNO COUNTY
PUBLIC EDUCATION SYSTEM
TOTAL K-12 ENROLLMENT
204,418

C2C STRATEGY: COLLECTIVE IMPACT

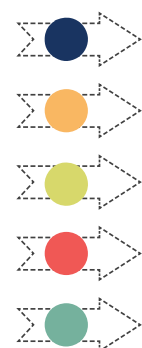
Together we can do so much more than even the best of us can do alone.

ISOLATION



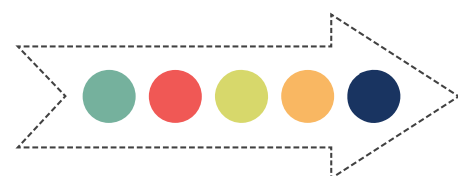
Individual pockets of excellence often operate independently from one another.

ALIGNMENT



By partnering across sectors, resources can be aligned toward a shared vision.

COLLECTIVE IMPACT



By sharing purpose and responsibility, aligned budgets and work plans have greater impact.

C2C GOALS: COLLABORATIVE ACTION AND CONTINUOUS IMPROVEMENT

Fresno Cradle to Career is a unique community-based partnership that brings together leaders, directors, managers and staff from ten sectors to collaboratively improve educational and health outcomes for all children in Fresno County.

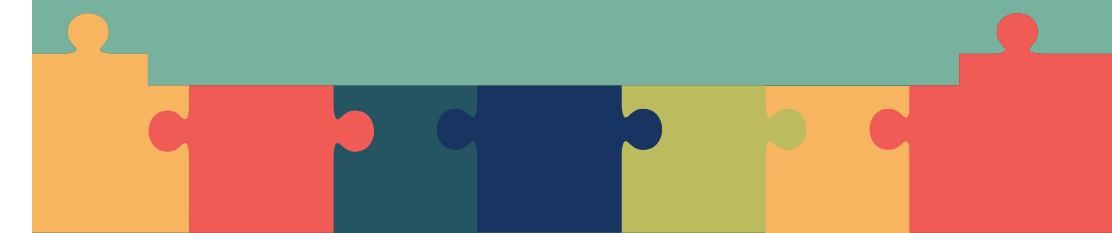
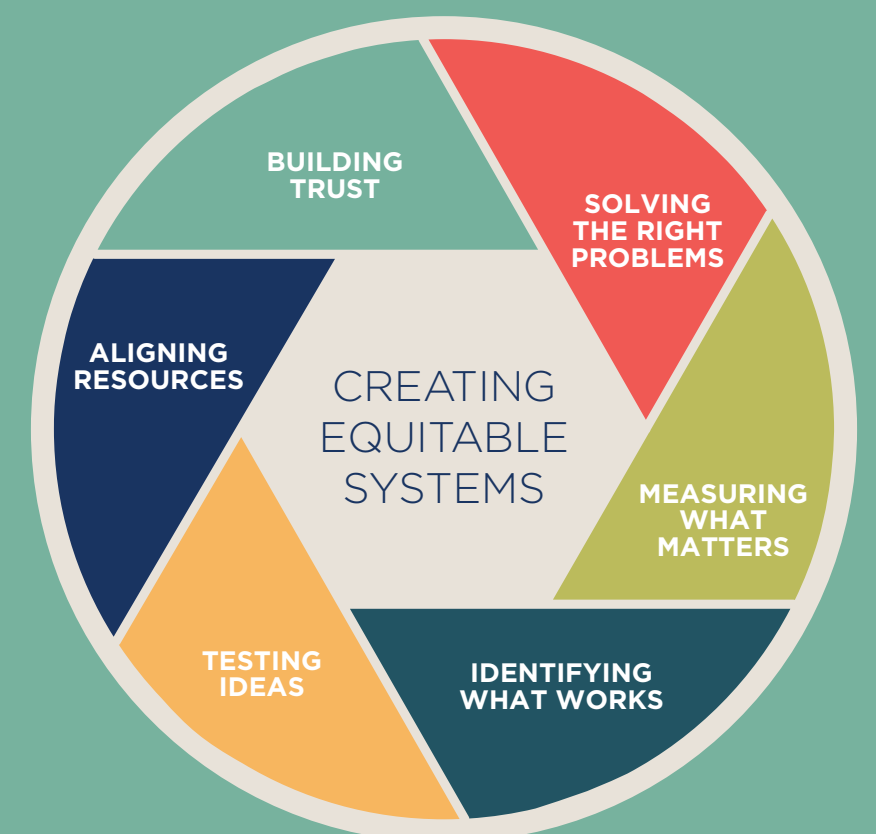
C2C PARTNERSHIP SECTORS

Early Learning
K-12 Education
Post-Secondary Education
Housing
Health
Local Government
Public Agencies
Business
Non-Profit Organizations
Philanthropy

To see a complete list of our partners, please visit www.fresnoc2c.org

CREATING THE ENABLING CONDITIONS FOR IMPROVEMENT

WHAT C2C SUPPORTS



OUR KIDS • OUR VALLEY • OUR FUTURE

A COMMUNITY AGENDA FOR IMPROVING
THE LIVES OF CHILDREN AND FAMILIES

CRADLE TO CAREER
FRESNO COUNTY



OUR VALUES

The potential of our children is our most valuable resource. Poverty cannot be a barrier to success and race cannot define opportunity. Education is the most effective ladder for children to reach their full potential.

